



Installer manual



Contents

Safety instructions	2
Aqualoop parts	4
Controller assembly	6
Remote unit installation	8
Wiring overview	12

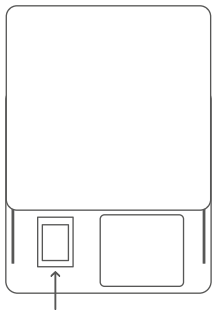
Safety Instructions

- This product must be installed by a competent person in accordance with **national and local electrical code requirements**. If in any doubt, consult a qualified electrician.
- To prevent electrocution, do not work on any appliance live. **Turn off the mains supply** before commencing work.
- This product **must not** be installed in bathrooms. See the current edition of the IEE wiring regulations.

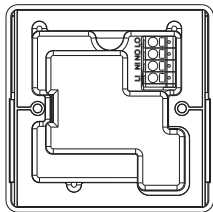
- This product is suitable for all **3kW** load heaters (**16A**). To prevent fire hazard do not exceed this rating.
- When using a metal back box to mount the controller the minimum depth that should be used is **25mm**. The box must be connected to earth.
- Product and packaging should be disposed of according to regulations regarding Electrical and Electronic Equipment.

Aqualoop parts

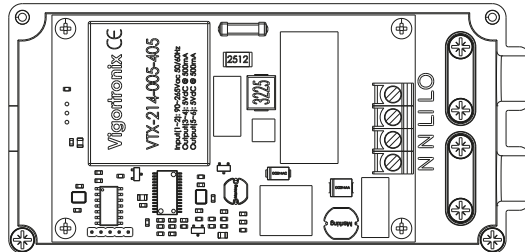
Aqualoop Controller: replaces a wall switch



Power switch



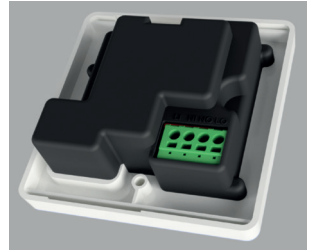
Aqualoop Remote unit: installed by the water heater



Controller installation

1. Check that the power switch of the Aqualoop controller is in the **off** position before starting the installation.
2. Ensure that no power is connected to the installation point. If possible switch off the mains power for safety.
3. If there is an immersion heater switch already installed, remove it marking the existing cables.

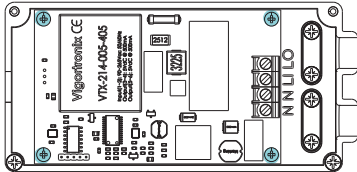
4. Wire the Aqualoop controller as shown on **pages 12–13**. Make sure that the wires are stripped by about 15mm. In the case of multi-strand wires insert a 3mm flat screwdriver in the slot next to the wire crimp to ease cable insertion.



5. Remove or slide the front face upwards to reveal the screw positions and affix the controller ensuring that no cable is crimped by the housing.

Remote unit installation

1. Ensure that the PCB is fastened to the enclosure body using the screws as shown.



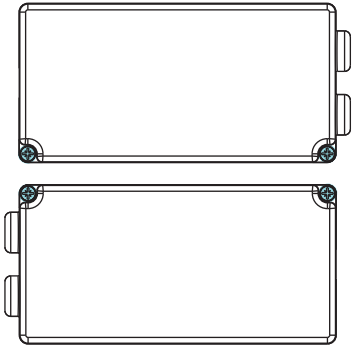
2. Wire the device as needed (**pages 12–13**), and clamp the cables using the plastic clips and 4 x M3 screws.

3. Remove the thermostat from the heating element sheath.
4. Attach the sensor head to the top of the thermostat using a small amount of tape.

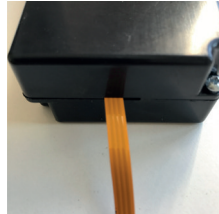
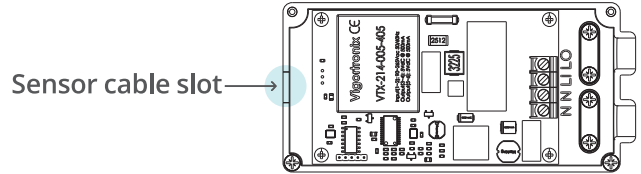


5. Carefully feed the thermostat back into the heating element sheath, ensuring that the sensor cable does not become snagged in the process.

6. Close the remote unit using the second remote enclosure part and screw into place using four M3 screws as indicated.

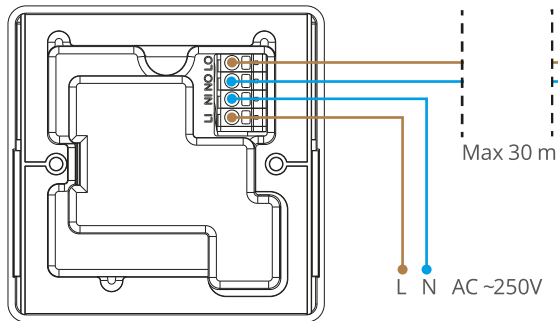


7. Make sure the sensor cable passes freely through the provided slot in the housing.

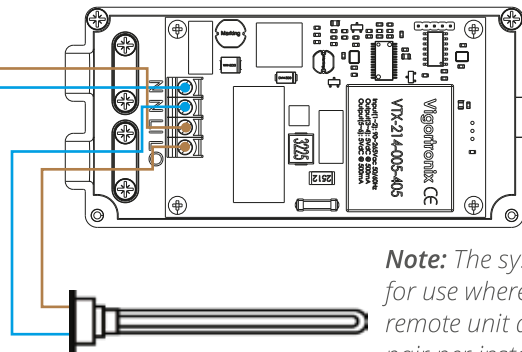


Wiring overview

The controller, remote unit and load should be connected as shown in the diagram.



The system is designed for operation at 220–250 VAC, up to 16 A. Normal operation is intended for a domestic 3kW water heater element at 230 V (approx. 13 A).



Note: The system is intended for use where there is only one remote unit and controller pair per installation.